



PN 10/16 - DN 80...200

KAT-A 5210-F

Product characteristics and benefits

- Fitting in accordance with EN 546
- With spigot end connection on one side and flange end on other side acc. to EN 1092-2
- For connection to VAG BAIO®*plus* System parts
- Spigot end with locking cams for internal bayonet locking
- Pull-out proof due to positive connection and friction-locked connection
- Short assembly times due to easy assembly or disassembly
- Stress-free laying due to flexibility of inclination up to +/- 3°

Materials

- Fitting: Ductile iron EN-GJS-400-15 (GGG-40)

Corrosion protection

- Internally and externally epoxy coated acc. to GSK guidelines

Field of application

- Underground installation
- Chamber installation



Tests and approvals

- DVGW tested and registered

Note

For proper installation and safe operation please follow the installation and operation instructions:
KAT-B 5210

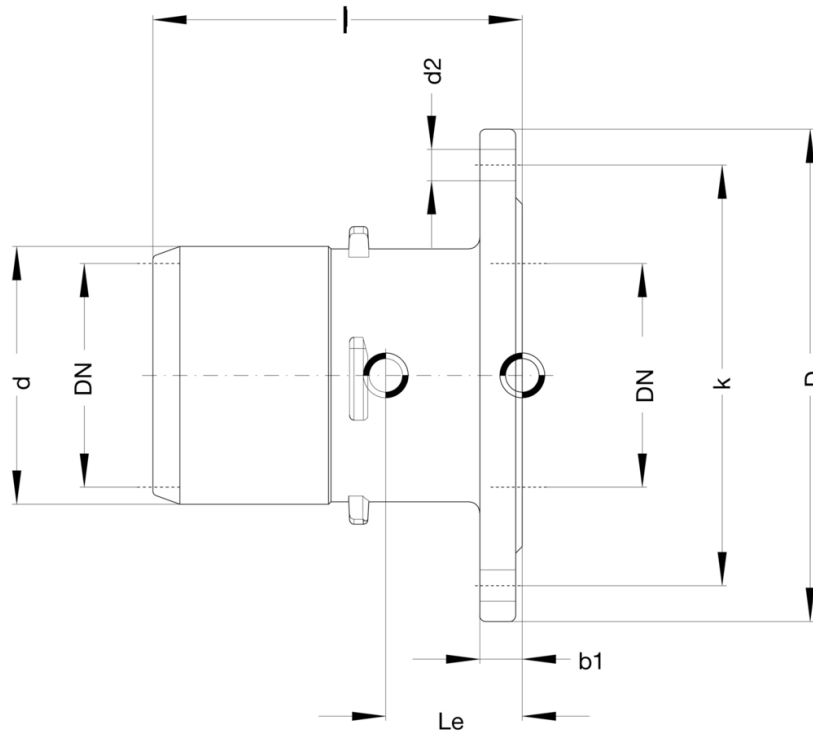
Operating conditions

DN	PN	Maximum operating pressure [bar]	Maximum operating temperature for medium [°C]
80...200	16	16	50
200	10	10	50

Pressure test to EN 545

Test pressure with water [bar]
25
25

Drawing



Technical data

PN 10

DN		200
Le	[mm]	68
D	[mm]	340
k	[mm]	295
b1	[mm]	20
d	[mm]	219
d2	[mm]	24
l	[mm]	185
Weight approx.	[kg]	14.50
Volume approx.	[m ³]	0.02

PN 16

DN		80	100	150	200
Le	[mm]	60	61	64	68
D	[mm]	200	220	285	340
k	[mm]	160	180	240	295
b1	[mm]	19	19	19	20
d	[mm]	95	115	167	219
d2	[mm]	20	20	24	24
l	[mm]	145	165	175	185
Weight approx.	[kg]	5.00	6.00	10.00	14.50
Volume approx.	[m ³]	0.01	0.01	0.01	0.02