



## PN 16 - DN 80...300

KAT-A 5210-EMS

## Product characteristics and benefits

- Fitting in accordance with EN 546
- With spigot end connection on one side and UNION coupling type socket for ductile cast iron pipe connection
- For connection to VAG BAIO®plus System parts
- For rehabilitation/exchange or for later extension of pipeline network parts
- Spigot end with locking cams for internal bayonet locking
- Corrosion-resistant due to boltless connection
- Pull-out proof due to positive connection and friction-locked connection
- Short assembly times due to easy assembly or disassembly
- Stress-free laying due to flexibility of inclination up to +/- 3°
- Moveable on the pipe end

## Materials

- Fitting: Ductile iron EN-GJS-400-15 (GGG-40)

## Corrosion protection

- Internally and externally epoxy coated acc. to GSK guidelines

## Field of application

- Underground installation
- Chamber installation



## Note

For proper installation and safe operation please follow the installation and operation instructions:  
KAT-B 5210

## Operating conditions

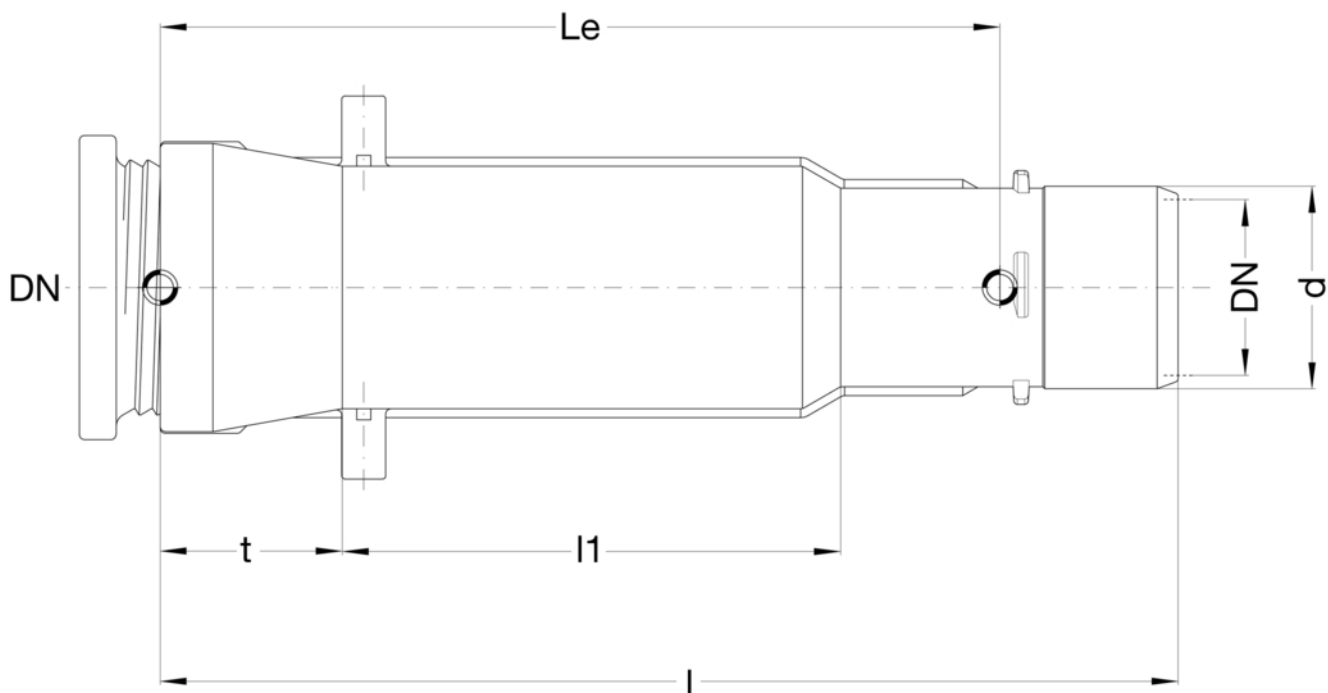
DN	PN	Maximum operating pressure [bar]	Maximum operating temperature for medium [°C]
80...300	16	16	50

## Pressure test to EN 545

Test pressure with water [bar]
25



Drawing



Technical data

PN 16

DN		80	100	125	150	200	250	300
Le	[mm]	471	476	504	504	578	561	568
d	[mm]	95	115	141	167	219	271	323
l	[mm]	555	580	615	615	695	730	750
l1	[mm]	275	280	290	285	350	380	395
t	[mm]	84	88	91	94	100	105	110
Weight approx.	[kg]	10.00	13.00	17.00	21.00	33.00	55.00	71.00
Volume approx.	[m <sup>3</sup> ]	0.01	0.01	0.01	0.02	0.03	0.05	0.08