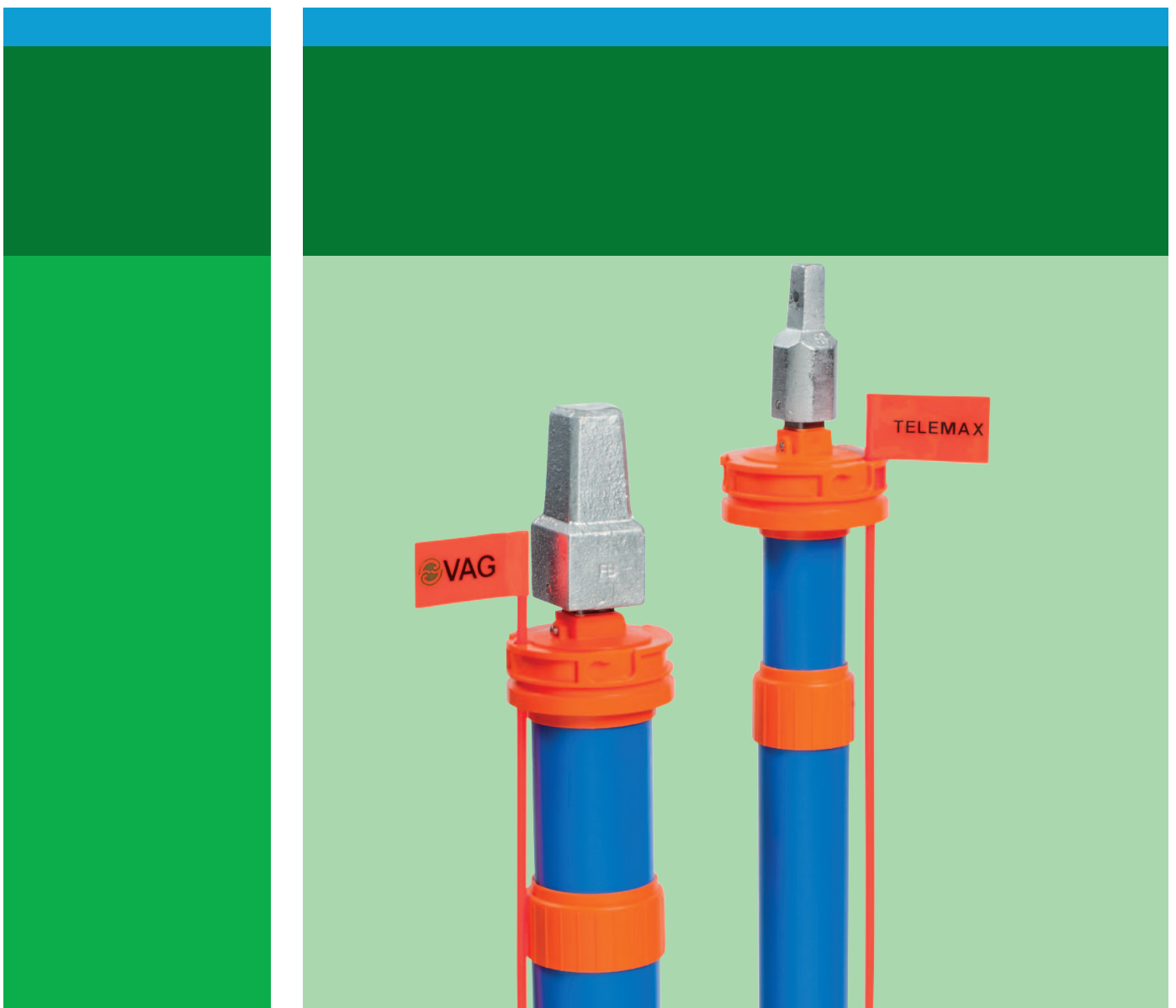


VAG TELEMAX[®] Stem Extensions





The right choice for all applications

VAG TELEMAX® Stem Extensions are the right choice if you wish to operate buried valves at street level. Their continuous and pull-out proof adjustability permits the adjustment of the cover depth at any time, even when the valve has already been installed and the trench filled. For the operation of gate valves, house connection valves and butterfly valves, the two product lines VAG TELEMAX® KOMPLETT and VAG TELEMAX® VARI are available.

Two product lines for different requirements

• VAG TELEMAX® KOMPLETT Stem Extensions:

Stem extension ready for installation with fixed coupling sleeve in the typical standard cover depths of 0.7 m – 1.0 m / 0.9 m – 1.3 m / 1.2 m – 1.8 m / 1.7 m – 2.8 m. You can choose between the galvanised or stainless steel type, either equipped with a coupling sleeve with pin or coupling sleeve with KLICK-FIX. VAG TELEMAX® KOMPLETT Stem Extensions can be identified by their orange protection tube collar.



• VAG TELEMAX® VARI Stem Extensions:

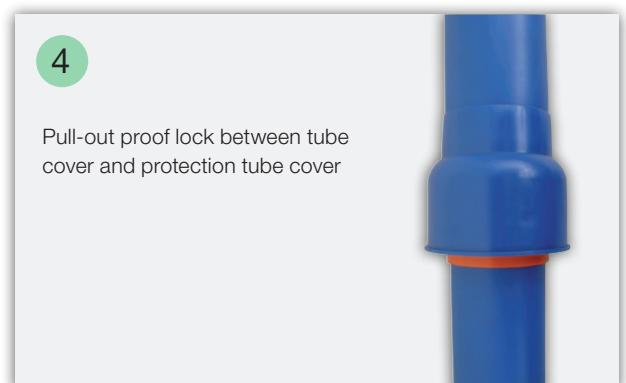
The basic body of the stem extensions is equipped with a connection square end at the bottom. The coupling sleeves needed to operate the valve are available as separate parts. The required coupling sleeve is mounted on site without any tools. VAG TELEMAX® VARI Stem Extensions can be identified by their blue protection tube collar.



Unique extension possibilities of stem extensions

VAG TELEMAX® Stem Extensions are the only available stem extensions in the market that can simply be mounted on top of each other and locked, irrespective of whether they are in installed or dismantled condition. The established connection is pull-out and dirt proof. Combined with the VAG TELEMAX® Extension Kit, valves with a cover depth ranging from 0.7 m to almost 5 m can be operated easily and flexibly.

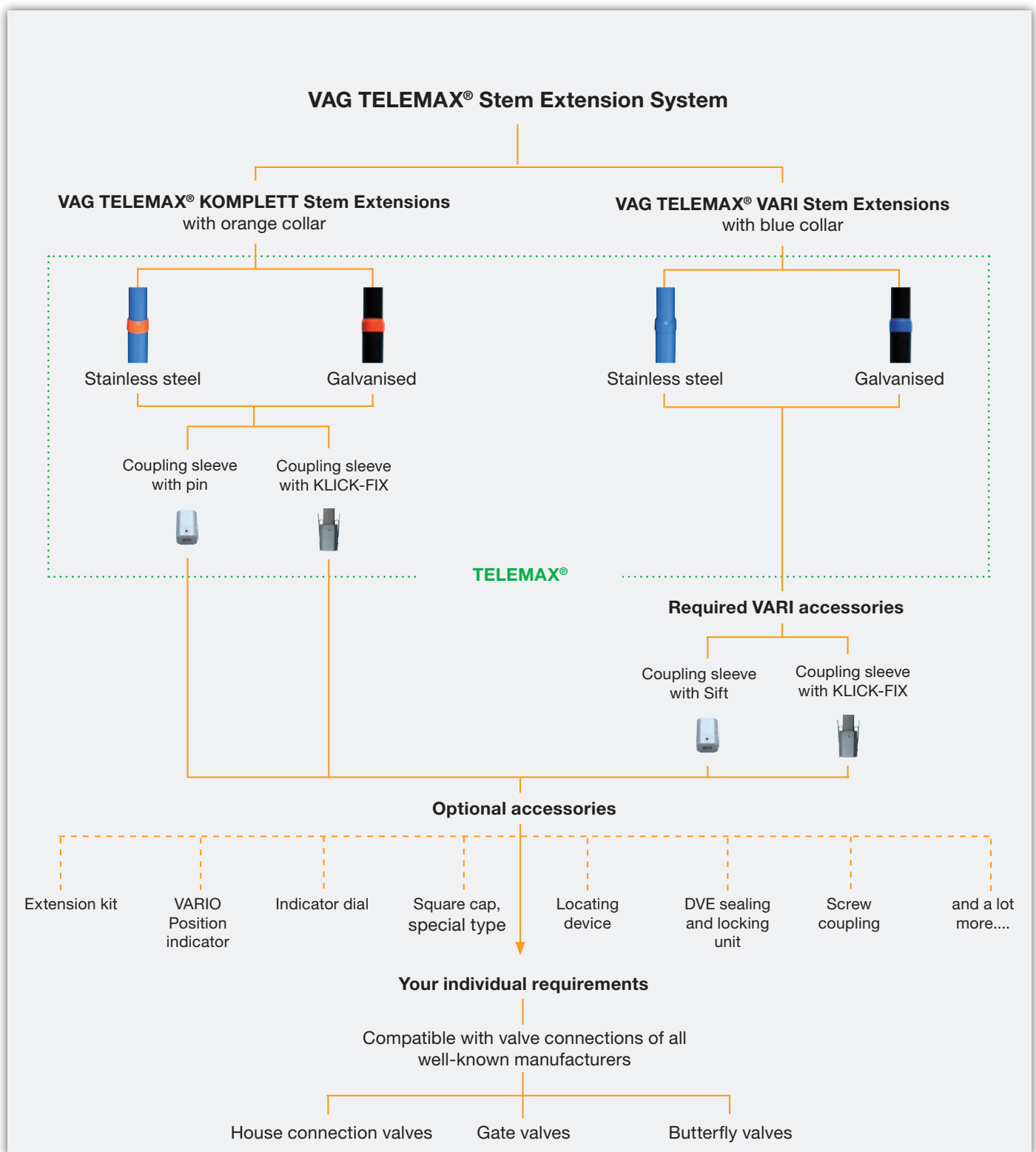
Connection of two VAG TELEMAX® Extension Stems:



Variety is our passion

Due to its great variety of options, the VAG TELEMAT[®] Stem Extension System provides the right solution for almost any application. No matter which of the two VAG TELEMAT[®] product lines you opt for – reliability, stability and flexibility always come first!

Besides the premium-quality stainless steel variety, all VAG TELEMAT[®] Stem Extensions are also available as galvanised types. The coupling and valve are locked either by a conventional pin connection or by the innovative VAG Klick-FIX spring connection for which no additional tools are needed. A large portfolio of components and accessories rounds off the VAG TELEMAT[®] Stem Extension range and allows you to tailor it precisely to your needs.





VAG TELEMAT[®] KOMPLETT Stem Extension

The most widely used extension

VAG TELEMAT[®] KOMPLETT Stem Extensions are the most economical solution when the nominal diameter and the installation depth of the valve are known in advance. This covers most of the applications found in daily work on construction sites (e.g. development of a new residential area).

The stem extension will be delivered in the cover depth and coupling sleeve size you specified with the coupling already connected. Its premium-quality and self-supporting design allows continuous adjustment of several stem extensions both in backfilled and assembled state.

Make your choice and decide whether you would like to work with the conventional coupling sleeve with pin or prefer the innovative coupling sleeve with KLICK-FIX for locking the valve stem without needing any tools.



VAG TELEMAT[®] KOMPLETT Stem Extension with protection tube and coupling sleeve assembled



Three possibilities for realising the right cover depth

VAG TELEMAT[®] Stem Extension



VAG TELEMAT[®] Stem Extension with extension kit



VAG TELEMAT[®] Stem Extension with second stem extension



VAG TELEMAT[®] VARI Stem Extension

The highly adaptable extension

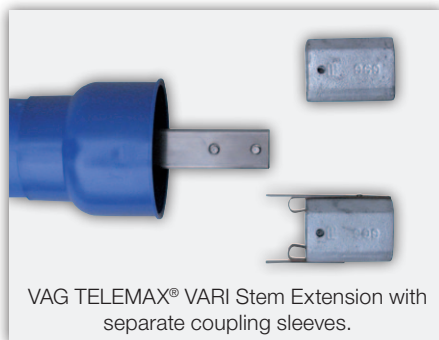
Die VAG TELEMAT[®] VARI Stem Extension is the right choice for construction and refurbishment work during which the end user might find unexpected and unknown installation conditions. Simply choose the VAG TELEMAT[®] VARI Stem Extension with the right cover depth and assemble the separate coupling sleeve matching the square end of the valve without using any tools.

In addition to this, the VAG TELEMAT[®] VARI Stem Extension is the right choice for end users who always wish to be flexible wherever they are.

Due to the VAG TELEMAT[®] VARI Stem Extension's kit system, you can greatly reduce the number of varieties in your stock.



VAG TELEMAT[®] VARI Stem Extension with protection tube and separate coupling sleeve



Flexibility of cover depth and connection square end

VAG TELEMAT[®] VARI Stem Extensions can not only be extended towards the top but also provide flexibility in the selection of the coupling sleeve size.

Example: Basic body of the stem extension suitable for gate valves sized DN 40 - DN 150



Coupling sleeve suitable for DN 40 / DN 50

Coupling sleeve suitable for DN 65 / DN 80

Coupling sleeve suitable for DN 100...DN 150



Gate valves DN 40 / DN 50



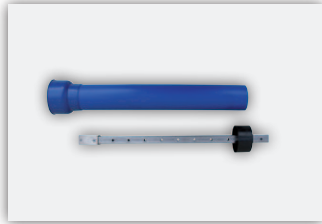
Gate valves DN 65 / DN 80



Gate valves DN 100...DN 150



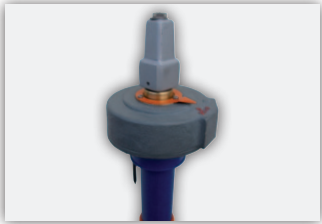
VAG accessories suitable for all VAG TELEMAX® Stem Extensions



VAG Extension kit

The extension kit consists of a protection tube with cap and a rigid stainless-steel extension. At the construction site, the extension and the protection tube simply need to be shortened with a hacksaw and can then be mounted to the stem extension. The extension kit is available in lengths of 30 cm and 50 cm.

Your benefit: You can compensate the lacking cover depth fast and easily at any time and even with already assembled and buried VAG TELEMAX® Stem Extensions.



VAG VARIO Position Indicator

The position indicator with coated cast iron body to protection class IP67 is suitable for mounting on VAG TELEMAX® Stem Extensions in plant construction. The valve can be supplied with the gear position indicator factory assembled and adjusted for your valve.

Your benefit: Check the opening degree of your valve at a glance. This helps to prevent operation errors and possible damage.



VAG Indicator dial

The indicator dial made of polystyrene can be mounted on any VAG TELEMAX® Stem Extension. Besides the standard model, the VAG indicator dial is also available with customer-specific indications.

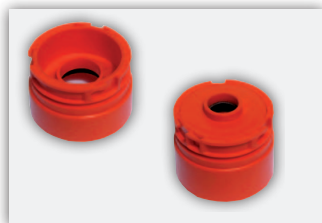
Your benefit: At a glance you can recognise the medium (water or gas), the operating direction of the valve or the valve type.



VAG Locating device

Die VAG TELEMAX® Stem Extension can be supplied with a factory-assembled locating device instead of the orange flag. The locating device consists of a high-performance magnet which can also be retrofitted in the field.

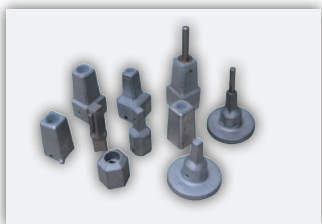
Your benefit: You can find the VAG TELEMAX® Stem Extension also in buried state with a commercially available metal detector up to a depth of 60 cm.



VAG DVE Sealing and Locking Unit

The DVE is installed between a VAG BETA® Gate Valve and a VAG TELEMAX® Stem Extension and provides a dirt-proof seal between the two units.

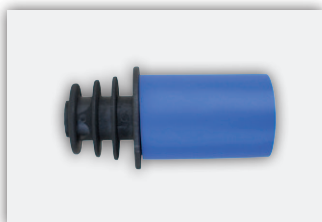
Your benefit: The DVE prevents the penetration of sediments between the protection tube and stem extension. This prevents sluggish operation and damage to the stem extension (e.g. in the event of high ground water levels).



Special types of square caps:

The VAG TELEMAX® Stem Extension can be equipped with a great variety of special square caps made of cast iron or stainless steel. The square caps can also be customised and designed to your own requirements.

Your benefit: The non-standard square cap prevents operation with standard operating keys and thus secures the stem extension against unauthorised access. This is particularly important e.g. in applications that are relevant for safety, such as the supply of fire-fighting water.



VAG HAFIX Transition Piece

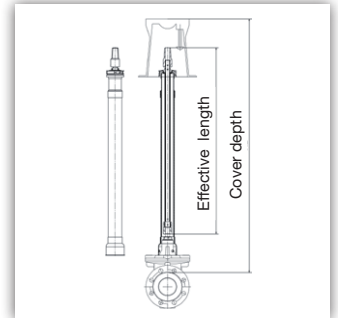
This special transition piece allows the use of VAG TELEMAX® Stem Extensions also with valves made by Hawle. The stem extension can be supplied together with a screw coupling.

Your benefit: VAG TELEMAX® Stem Extensions made of stainless steel also suitable for use with Hawle valves.

Definition of the effective length and cover depth

When the size of stem extensions is defined, different designations are used.

- Effective length = taken from the lower edge of the coupling sleeve to the upper edge of the square cap
- Cover depth = taken from the crest of the pipe to the ground level (street level)



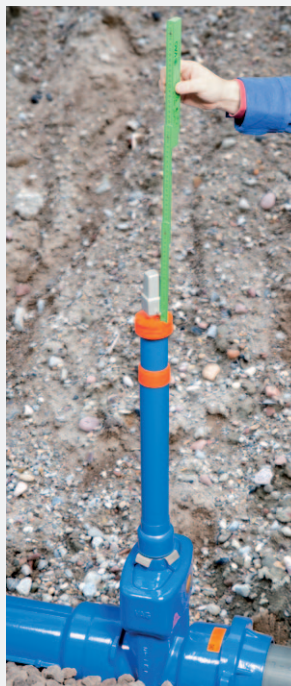
Extension possibility with the VAG Extension Kit

The unique possibility to compensate unexpected level differences fast and easily.

- 1 Completely extended VAG TELE-MAX® Stem Extension - but too short.



- 2 Measuring the required cover depth.



- 3 Shorten the extension kit to the desired length.



- 4 Remove square cap. Establish a pull-out proof connection of the interior sets via a pin.



- 5 Establish a pull-out proof lock of the tube cover and the protection tube cover.



- 6 Replace the square cap and secure it with pins.





Installation Examples

